

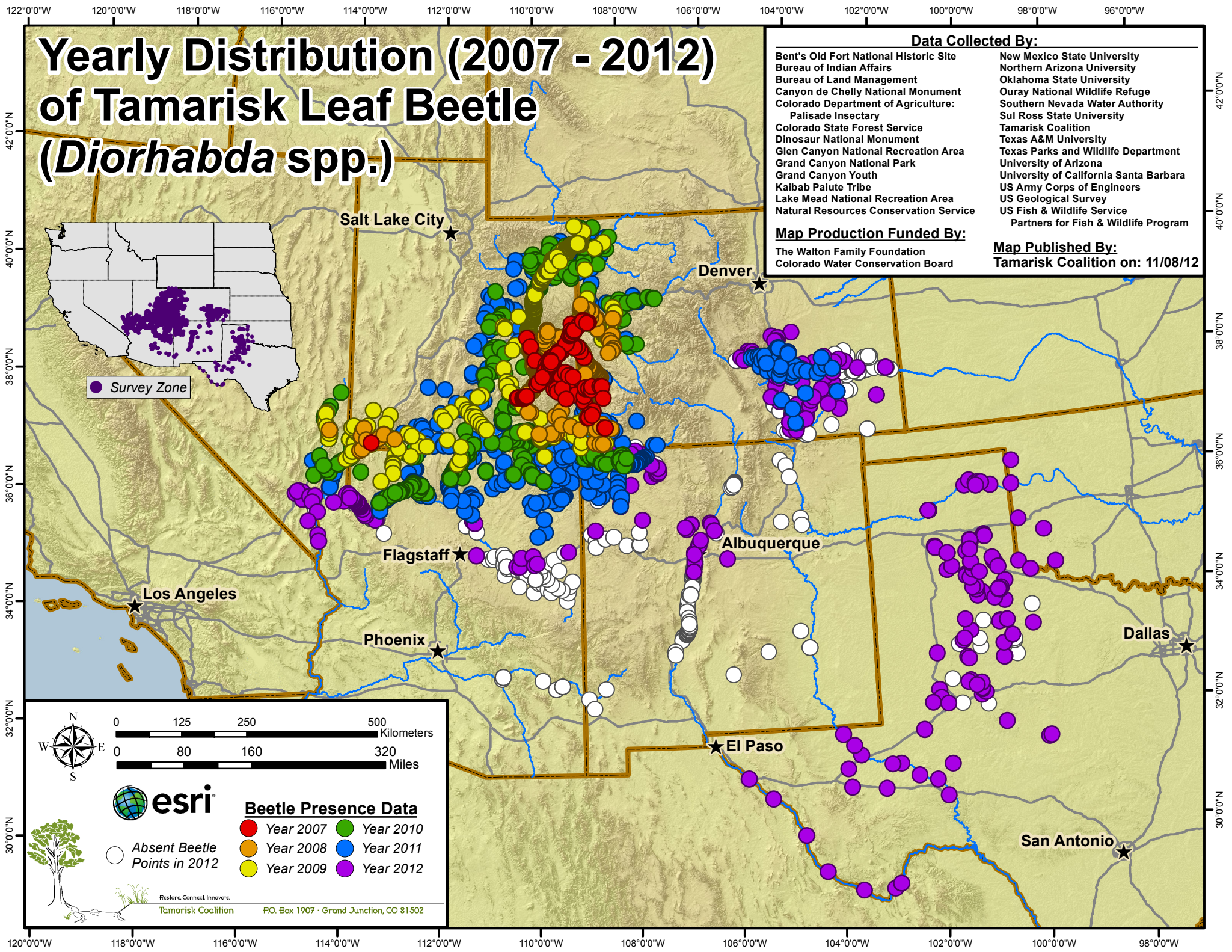
Yearly Distribution (2007 - 2012) of Tamarisk Leaf Beetle (*Diorhabda* spp.)

Data Collected By:

Bent's Old Fort National Historic Site	New Mexico State University
Bureau of Indian Affairs	Northern Arizona University
Bureau of Land Management	Oklahoma State University
Canyon de Chelly National Monument	Ourray National Wildlife Refuge
Colorado Department of Agriculture:	Southern Nevada Water Authority
Palisade Insectary	Sul Ross State University
Colorado State Forest Service	Tamarisk Coalition
Dinosaur National Monument	Texas A&M University
Glen Canyon National Recreation Area	Texas Parks and Wildlife Department
Grand Canyon National Park	University of Arizona
Grand Canyon Youth	University of California Santa Barbara
Kaibab Paiute Tribe	US Army Corps of Engineers
Lake Mead National Recreation Area	US Geological Survey
Natural Resources Conservation Service	US Fish & Wildlife Service
	Partners for Fish & Wildlife Program

Map Production Funded By:
The Walton Family Foundation
Colorado Water Conservation Board

Map Published By:
Tamarisk Coalition on: 11/08/12



Beetle Presence Data

- | | |
|-------------|-------------|
| ● Year 2007 | ● Year 2010 |
| ● Year 2008 | ● Year 2011 |
| ● Year 2009 | ● Year 2012 |
- Absent Beetle Points in 2012

Restore. Connect. Innovate.

Tamarisk Coalition

P.O. Box 1907 · Grand Junction, CO 81502

Collaboratively Monitoring the Expansion of the Tamarisk Leaf Beetle

(*Diorhabda* spp.) 2007-2012

The yearly tamarisk leaf beetle distribution map is a result of monitoring partners from seven states and a multitude of funding sources. Tamarisk Coalition would like to recognize all of the individuals, agencies, organizations and foundations that make this monitoring possible.

If you are interested in becoming a monitoring partner or in funding these efforts, please contact Season Martin (smartin@tamariskcoalition.org).



Funding Sources (2007-2012)

Bureau of Indian Affairs
 Bureau of Land Management
 The Canadian River Municipal Water Authority
 Colorado Department of Agriculture
 Colorado River Municipal Water District, Texas
 Colorado Water Conservation Board
 Dinosaur National Monument
 Grand Canyon Association
 Grand Canyon National Park
 Kenny Brothers Foundation
 National Park Centennial Challenge
 National Park Service
 Oklahoma Cooperative Extension Service
 Ouray National Wildlife Refuge
 Sustainable Agriculture and Research and Education Program
 Texas Parks and Wildlife Department
 Texas State Soil and Water Conservation Board
 US Fish and Wildlife Service
 US Geological Survey
 Telluride Foundation
 The Walton Family Foundation
 Williams

Partner Acknowledgements

Bent's Old Fort National Historic Site: Fran Pannebaker, Adam Heberlie
 Bureau of Indian Affairs: Renee Benally, Roxanne Harrison, Patricia Wright
 Bureau of Land Management: Sarah Scott, Jacob Young, Royal Gorge Field Office, Interdisciplinary Team
 Canyon de Chelly National Monument: Mick Castillo
 The Canadian River Municipal Water Authority: Kent Satterwhite & Rod Goodwin
 Colorado Department of Agriculture, Palisade Insectary: Dan Bean, Sonya Ortega, Nina Loudon
 Colorado State Forest Service
 Dinosaur National Monument: Peter Williams
 Glen Canyon National Recreation Area: Lonnie Pilkington, John Spence, Minh Le, Oscar Gonzalez, Jordan Pina, Bill Raitter, Mclean Worsham & Frankie Coburn
 Grand Canyon National Park: Lori Makarick
 Grand Canyon Youth: Emma Wharton
 Kaibab Paiute Tribe: Sarah Burger
 Lake Mead National Recreation Area: Curt Deuser
 Natural Resources Conservation Service: Patty Knupp
 New Mexico State University: Dave Thompson
 Northern Arizona University: Matt Johnson
 Oklahoma State University: Tom Royer & Alissa Berro
 Ouray National Wildlife Refuge: Diane Penttila
 Southern Nevada Water Authority: Jason Eckberg
 Sul Ross State University: Chris Ritzi
 Texas A&M University: Allen Knutson, Jerry Michels, James Tracy, Erin Jones, Mark Muegge
 Texas Parks and Wildlife Department: Chip Ruthven & Matthew Poole
 University of Arizona: Levi Jamison
 University of California Santa Barbara: Tom Dudley
 US Army Corps of Engineers, Albuquerque District
 US Bureau of Reclamation: Debra Eberts (retired)
 US Fish & Wildlife Service Partners for Fish and Wildlife Program: Katy Fitzgerald